

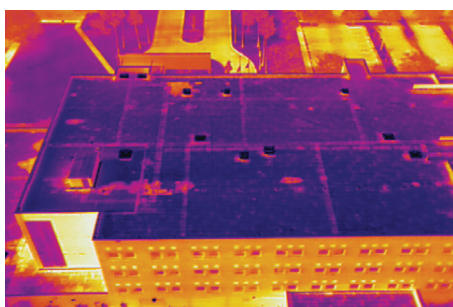


FLIR DuoTM Pro

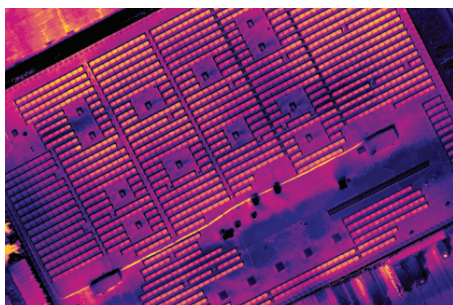
High-Resolution Thermal and Visible-Light Imager for sUAS.

The new FLIR® Duo™ Pro transforms any airframe into an industrial tool, expanding its value and uses. It is a powerful dual-sensor thermal and visible-light imager designed for a wide range of high-performance commercial, industrial, and public safety drone applications. Featuring thermal and a high-definition 4K color video camera in a single integrated package, Duo Pro gives professional operators the ability to capture actionable thermal and visible data in a single flight.

Beyond its class-leading imaging performance, Duo Pro includes an on-board sensor suite to create a self-contained airborne mapping package. These fully integrated sensors provide an on-board source for all the vital data needed to create accurate maps and 3D models from an airborne platform. By geo-tagging each captured image within the camera Duo Pro eliminates the complexity, data loss, and latency that can come from integrating to external flight control systems.



Find problems with buildings like water and insulation damage in roofs.



Use the on-board sensor suite to make more accurate orthomosaics of large installations like this solar farm.



Duo Pro is an invaluable tool for fire fighters and other first responders.

High resolution thermal and 4K visible-light imaging and recording in a rugged, compact package

Capture video & still imagery in both thermal and video simultaneously for improved understanding of every scene

- Airborne dual sensor thermal and video imaging and recording in a single component
- Wide 5-26 VDC power input range
- MSX blending for greater image detail in daylight conditions
- Live digital video output over micro-HDMI

Fully-integrated thermal and visible airborne mapping system

Get accurate metadata, including GPS, temperature, and altitude, for every image

- On-board GPS receiver, IMU, temperature, humidity, and altitude sensors
- Tightly coupled integration ensures the most accurate image geo-tagging possible
- Convenient integration to MAVLink-compatible flight controllers

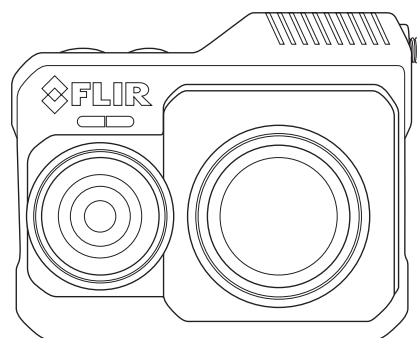
Flexible, powerful camera control and configuration options

Multiple thermal resolution and lens options give you the optimal configuration for your missions

- Control camera functions with PWM inputs – imagery color palettes, recording start/stop, still image capture, or video streaming switch (thermal, visible, MSX, PIP)
- Configure your camera's recording and control settings over Bluetooth with the FLIR UAS mobile app
- Field-upgradeability make sure you'll always have the latest features

Specifications

| Overview | Duo Pro 640 | Duo Pro 336 |
|-------------------------------------|--|------------------|
| Thermal Imager | Uncooled VOx Microbolometer | |
| Spectral Band | 7.5 – 13.5 μm | |
| Thermal Sensitivity | < 50 mK | |
| Thermal Sensor Resolution Options | 640 x 512 | 336 x 256 |
| Thermal Lens Options | 13 mm: 45° x 37° | 9 mm: 35° x 27° |
| | 19 mm: 32° x 26° | 13 mm: 25° x 19° |
| | 25 mm: 25° x 20° | 19 mm: 17° x 13° |
| Thermal Frame Rate | 30 Hz | |
| Visible Sensor Resolution | 4000 x 3000 | |
| Visible Camera FOV's | 56° x 45° | 56° x 45° |
| Radiometry | | |
| Measurement Accuracy | +/- 5 C or 5% of readings in the -25°C to +135°C range +/- 20 C or 20% of readings in the -40°C to +550°C range | |
| Physical Attributes | | |
| Size | 87 × 82 x 69 mm | |
| Weight | 325 g 375 g (640-25 mm only) | 325 g |
| Image Processing & Display Controls | | |
| Imaging Modes | IR-only, Vis-only, Picture-in-Picture (IR in Vis) | |
| MSX Image Enhancement? | Yes | |
| Multiple Color Palettes? | Yes – Adjustable in App and via PWM | |
| IMU Sensor | | |
| GPS? | Yes (GPS, GLONASS) | |
| Other Sensors | Accelerometer, Gyroscope, Magnetometer, Barometer | |
| Interfaces | | |
| USB 3.0 | Power in, USB Mass Storage | |
| 10-Pin Accessory Port | Power in, Analog Video Out, PWM, MAVLink, Frame Sync Out | |
| Micro-HDMI | Digital Video Out | |
| Input Voltage | 5.5 - 26.0 VDC (10-pin JST Port) | |
| | 5.0 VDC (USB-C Port) | |
| Power Dissipation (avg) | 10 W | 10 W |
| Remote Control? | Yes - PWM (3 channels), MAVLink | |
| MAVLink interface? | Yes | |
| Digital Video Output | 1080p60, 1080p30, 720p60 | |
| Mounting Features | 1/4"-20 TPI Tripod Mounts (qty 2, bottom surface) | |
| Environmental | | |
| Operating Temperature Range | -20°C to +50°C | |
| Storage Temperature Range | -20°C to +60°C | |
| Operational Altitude | +38,000 feet | |



PORTLAND
Corporate Headquarters
FLIR Systems, Inc.
27700 SW Parkway Ave.
Wilsonville, OR 97070
USA
PH: +1 866.477.3687

FLIR Systems, Inc.
6769 Hollister Avenue
Goleta, California 93117
USA
PH: +1 201.368.9700

FLIR Systems, Inc.
9 Townsend West
Nashua, NH 03063
USA
PH: +1 866.477.3687

www.flir.com
NASDAQ: FLIR

Equipment described herein may require US Government authorization for export purposes. Diversion contrary to US law is prohibited. Imagery for illustration purposes only. Specifications are subject to change without notice. ©2017 FLIR Systems, Inc. All rights reserved. 0817 17-2249