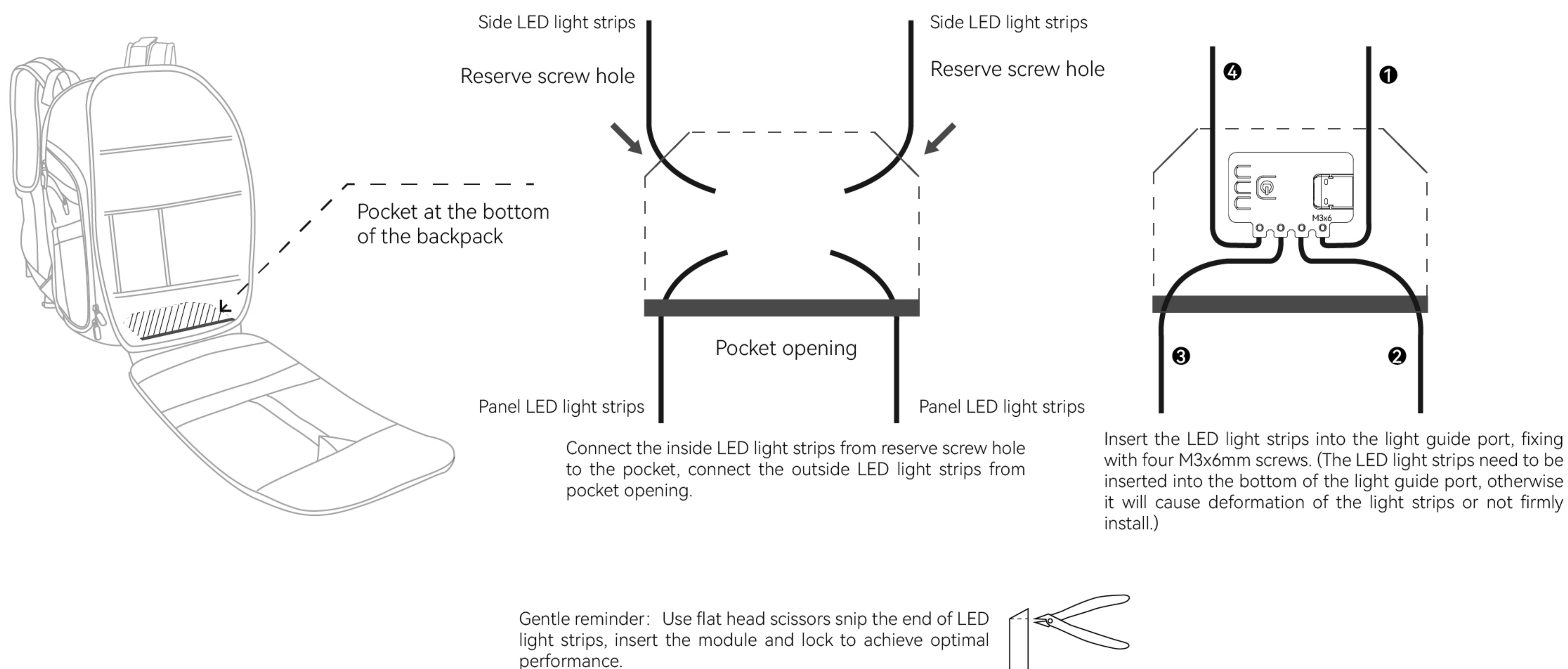


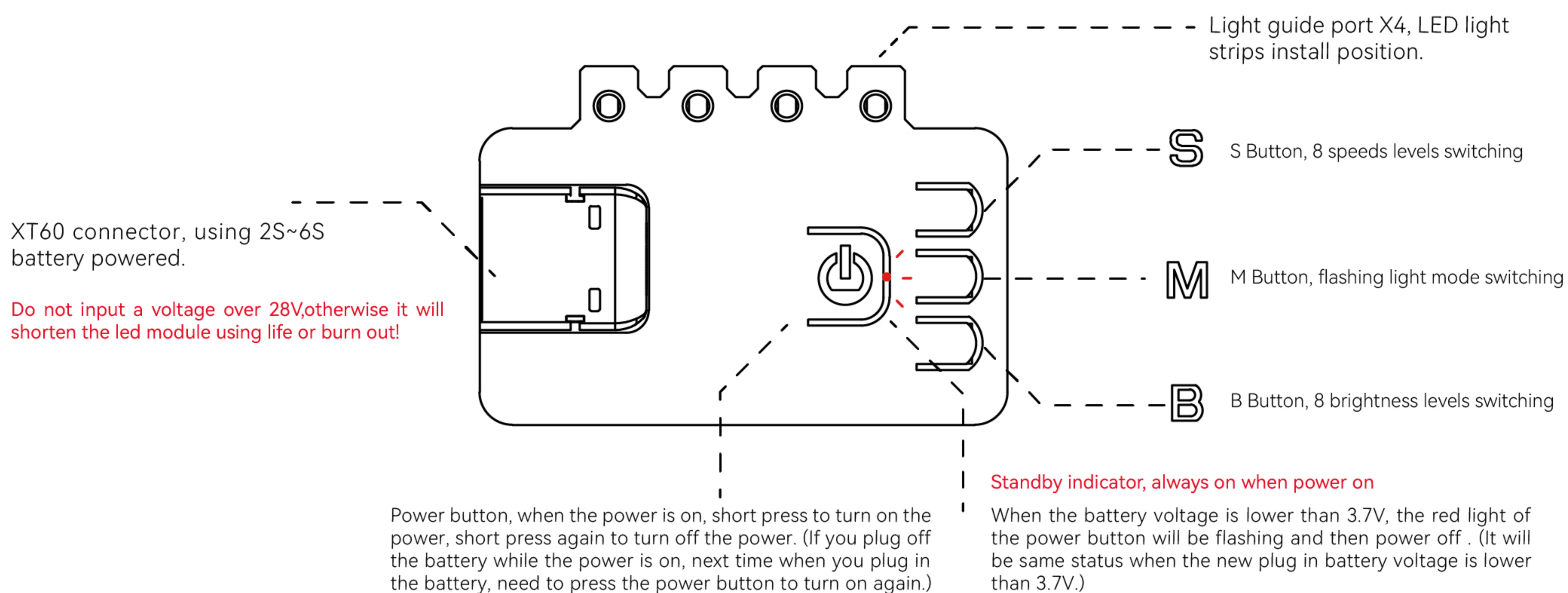
RGB LED Module Instruction



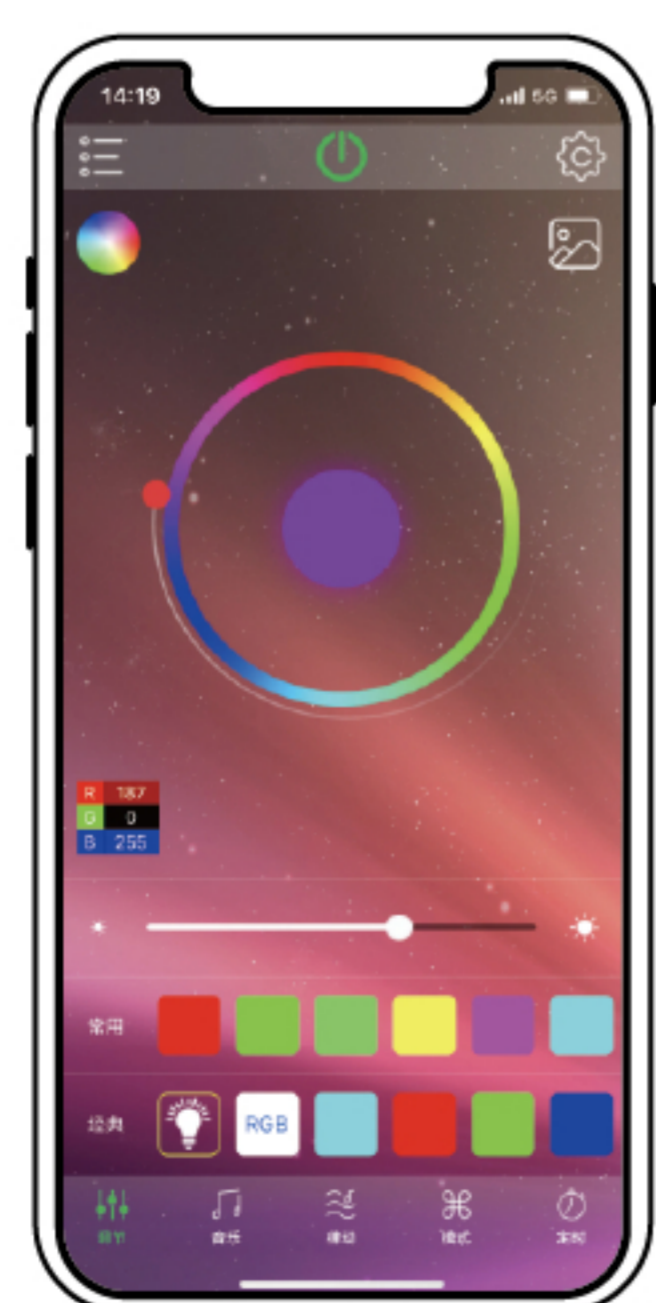
1. Install RGB LED Module




2. Using of RGB LED Module



Scan to install the "HappyLighting" APP



1. Plug in battery and turn on the power of LED module.
1. Turn on the Bluetooth and open the "HappyLighting" APP.
3. When the "  " appears on the APP, then connection is successful.
4. Adjust the colour, mode, flashing and speed of the LED through the mobile APP when it connects successfully

Notice: If the LED light turned off through the bluetooth control while the standby light is on, the light cannot be turned on with the physical button, you can turn it on again in the APP.

3. Basic Parameters

Name: RGB LED Module	Color: RGB multicolor
LED Bead type: 12ma high brightness pixel bead	Mode: Solid light mode and flashing light mode
Connector: XT60 Female Adapter	Working Time: 25-30 hours (6S 1300mAh battery)
Power Consumption: 0.2W (standby), 1.2W (MAX)	Voltage Protection: Automatic power off when a single cell is lower than 3.7V

Detailed battery voltage table	
2S battery	7.4V-8.7V
3S battery	11.1V-13V
4S battery	14.8V-17.4V
5S battery	18.5V-21V
6S battery	22.2V-26.1V